

# Winterfest 2012

## Bartlett Nature Center

*Adopt A Husky, Inc.*

*Dog Sledding Demonstration*

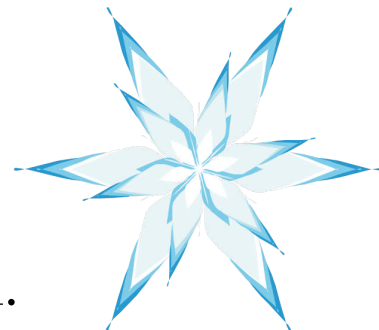


***Come mush with us!***

Saturday, February 11, 2012

12 (Noon) to 4pm

This event is **FREE**, no reservation required.



Experience the prairie in winter and forge a new snow shoe trail!

***Snow? No Snow? The dogs are still ready to go!***

Adopt A Husky, Inc. will be at the Bartlett Nature Center with their teams of Siberian Huskies and sleds. Learn about the history of dog sledding and the equipment they use. Participate in snow related activities.

**To ensure a safe and fun environment, please leave your own dogs at home.**

The Bartlett Nature Center is located at the James "Pate" Philip State Park, 2054 W Stearns Road  
(847)608-3100

[www.BartlettParks.org](http://www.BartlettParks.org)

On the north side of Stearns Road, one mile east of Route 25, two miles west of Route 59



A Facility of the Bartlett Park District



WORLD'S FOREMOST OUTFITTER®  
Hunting • Fishing • Outdoor Gear